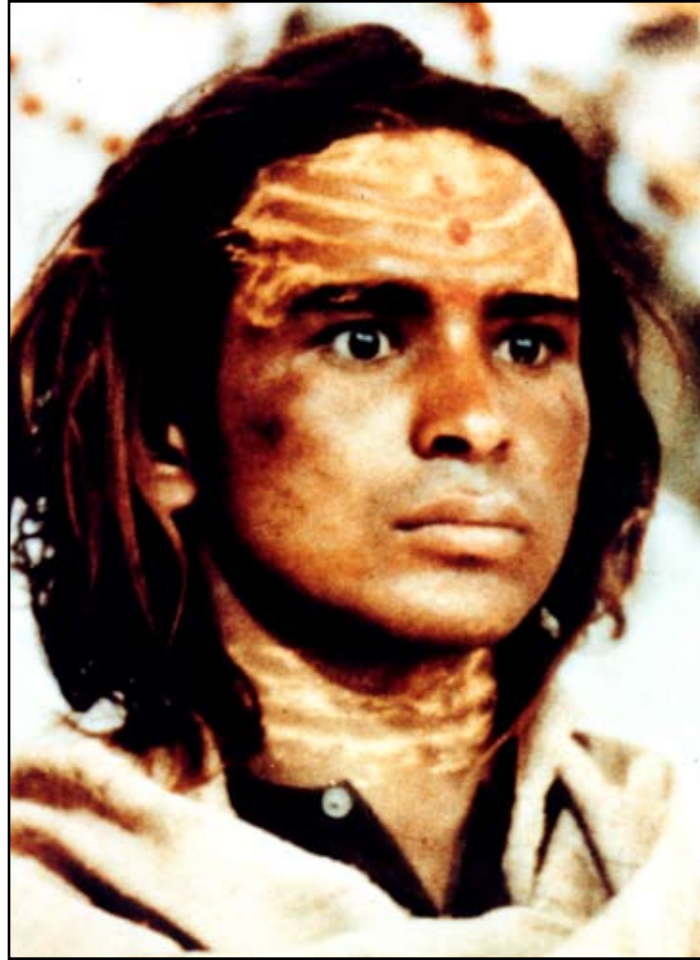


Om Namah Shivaya



To Serve More Fully

Haidakhandi Universal Ashram

# To Serve More Fully at the Haidakhandi Universal Ashram

The Haidakhandi Universal Ashram is a spiritual community and pilgrimage center inspired by Haidakhan Babaji and dedicated to the Divine Mother. It was established in 1986 and is located at the base of the beautiful 14,000-foot Sangre de Cristo Mountains in Southern Colorado on 101 acres of pristine land. This area, sacred to Native Americans because of its spiritual power, is also home to several other spiritual traditions such as the Catholic Carmelites, Tibetan Buddhists, Zen Buddhists, and Shinji Shumeikai.

Life at the Ashram is guided by the life-style we lived with Shri Babaji at His Ashram in Haidakhan. His main teachings were to live lives of truth, simplicity, love, and service. The inviting atmosphere of the Ashram creates a sense of community and loving family. Many are drawn here to experience this sense of love and belonging.

In keeping with Babaji's teaching of simplicity, we strive to live and build in sustainable ways with an organic garden and greenhouse, our own water system, photovoltaic-derived electricity, and solar heating. Service is an ongoing aspect of the Ashram, primarily the service needed to maintain, sustain, and enhance the facilities so that pilgrims and seekers may come here from around the world to pray, meditate, worship, and serve.

*"I was longing for community and found it at the Ashram. I learned that loving God in every human being is the most important thing.*

*Doing karma yoga and worshipping in the temple facilitates that. I am sure that when I was scraping paint I was not just scraping paint. I look forward to continuing communion with all of you."*  
*Melinda, MO.*



*"Please accept once again my gratitude for the wonderful hospitality you show to my Colorado College class. Your*

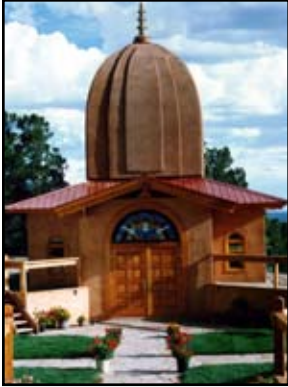
*lifestyle, good humor, and graciousness certainly reflect your values of love, service, and community. As always, it was the highlight of the class's trip to Crestone."*

*Steve, Colorado College Professor, CO.*



*"Many thanks for planning the perfect Ashram welcoming for Natasha [her newly adopted Russian daughter]! It meant so much to her to see that she belongs to this wonderful spiritual family. All of our love to you all." Alice, N.M.*

# Our Early Development



In 1989, we completed the first building on the land, which was the 810 square foot temple dedicated to the Divine Mother. This sacred space has high ceilings, a central dome (or cupola) that rises 34 feet into the air and is home to a life-size marble murti (statue) of the Divine Mother. This, as are all of our buildings, is off the grid, using only photovoltaic DC energy for lights and passive solar and radiant floor solar for heat.



In 1991, we completed a circular wood-framed yurt that is 68 feet in circumference. This simple building has no electricity or plumbing and uses a wood burning stove for its heat source. The yurt is used for extra dormitory space.



We completed a gravity-feed water system that is approximately 1500 feet long, in 1992. Beginning at the Spanish Creek, which flows along our Ashram property, it includes a set of measuring weirs, a sand filter, and a 6,000 gallon reservoir which supplies all of the Ashram buildings and gardens.

In 1994, we completed a quarter acre garden and orchard. This is watered primarily by drip irrigation and employs only organic methods of gardening. The harvest from the garden supplies us with many vegetables, as well as an abundance of flowers for the temple and ceremonies. The orchard of apple, apricot, cherry, and plum trees is just coming to full maturity.



In 1996, we completed the 1,920 square foot earthship which houses our office, shop, kitchen, and dining area. This innovative and sustainable building is constructed of used tires rammed with earth and recycled aluminum cans. The heat comes exclusively from passive solar gain. The electricity derived from photovoltaic collectors is inverted to provide AC electricity to run the lights, computers, and other office equipment.

In 1998, we built the 1000 square foot greenhouse. It is built of strawbale, polycarbonate panels, and utilizes a rock wall for thermal mass. The greenhouse provides us with fresh vegetables and flowers throughout the year.



We completed the beautiful 2300 square foot dormitory in Fall of 1999. This is constructed of strawbale and adobe block, with poured adobe mud floors. There are four semi-private rooms, one large dorm



room, and men's and women's bathrooms. The electricity is generated from photovoltaic collectors and the building is heated primarily by passive solar gain and solar radiant heat in the floor. The dormitory accommodates our many guests and our long-term residents.

In 2001, we completed renovation of the strawbale hermitage which was originally built in 1996. This structure is passive solar with radiant heat in the floor from solar collectors. The structure is 225 square feet and is used to house residents.



The new 3,000 square foot kirtan hall was completed in 2004 and adds additional seating for over 200 people to the existing temple. It is constructed of straw bales and has poured adobe floors with solar radiant heat as its heat source and photovoltaic electricity.

***"I want to tell you what a wonderful time my wife and I had during our brief but unforgettable visit to the Ashram. We had not been there for 11 years and we were totally awed by the progress made on the material plane as well as the spiritual. The presence of the Divine Mother is so sweet and strong. What a wonderful gift Babaji has given to His Western devotees to have the Ashram in Colorado." Nirmal, CA.***



# How We Are Growing

Since its beginnings, the Ashram has experienced continuous growth. With each successive step, our supporters have risen to the occasion and provided the funds needed for the continual expansion of facilities so that we could better serve our community and visitors.

In the last several years we have seen the numbers of visitors increase tenfold. In 1996 approximately 700 people visited the Ashram. In 2000 we estimated that 3,500 people came to the Ashram, in 2005 over 5,000, and in 2009 over 7,000 visitors. Sales from the Maha Lakshmi Shop have steadily increased as well, which provides a great support to the Ashram.

We are now looking toward securing the necessary facilities to accommodate our already overflowing crowds of visitors and spiritual pilgrims. Using our experiences with this large number of visitors, we are better able to plan our new facilities to serve more fully the people that come here .



We have attached a floor plan of the new kutir (room) for Shri Babaji which we plan to build in Spring of 2010. We also show the floor plans and sketch of a new office, shop, dining, kitchen complex which we created with an architect who is well versed in Sthapatya Ved. By applying this ancient science from India, the architect creates buildings that are able to vibrate in harmony with universal energies. We also are working on conceptual designs of a new residential building for our long-term staff.

The Ashram is a growing, dynamic spiritual and pilgrimage center. It is full of the energy, love, and compassion of the Divine Mother and Haidakhan Babaji. We invite you to be part of the continued growth of their home here in the beautiful Rocky Mountains of Colorado.



# How The Ashram Impacts Lives

Every week we receive letters, phone calls, and emails from people who have visited the Ashram. Some of these messages are quoted throughout the document. Here are a few more comments from pilgrims and visitors:

"I have been raised as a devout anti-organized religionist, and for me to actually be able to see the good in religion and the love that can come through it is an amazing step. I felt it most personally at the Haidakhandi Universal Ashram. I was completely taken aback by the accepting and loving atmosphere that seemed to penetrate the whole Ashram and the people within it. I was completely moved, and I don't know any other way to put it. Feeling the calm, love and incredible desire and drive to do 'good' that surrounded the Ashram, I was deeply touched." Carey, Colorado College Student, CO.



"I wanted to celebrate my birthday in a special way in some very holy place and do some service. For that I felt the Ashram in Crestone was the only right place. The folks treated us like we were part of the Ashram Family. I plan to visit the Ashram every birthday, unless I am in India, and at least once every two months as long as I live in Colorado." Raj, CO.

"The time always goes far too fast when I am at the Ashram and yet the little time I spend there expands when I leave, and I hold the experience of being at the Ashram close to me until I am able to come again. Thank you for tending and keeping the Ashram. I know it is a lot of work and I know, too, that you all do it with steadfast love." Elizabeth, TN.

"Thank you again for your continued openness and embodiment of compassion to our students. The fact that nearly every one of the twenty-five students mentioned the Ashram in their reports from visiting Crestone is a tribute to the spirit of your community. I always look forward to bringing my students there." Bruce, Chaplain at Colorado College, CO.

"Thank you for organizing the Family and Children's Week at the Ashram. I delighted in my children having an Ashram community to relate to and love that they were able to help at aarati and in the temple. I also was touched by how the larger Ashram community and Crestone community cares for and values children as shown by their attention to and inclusion of the children." Monty, WA.



# PROJECT GOALS

In recognition of the Board of Directors' reaffirmation of the Haidakhandi Universal Ashram as a pilgrimage center, the following building, capital, and endowment goals were determined to be of the highest priority.

## Capital Projects

### **Babaji's Kutir** **\$25,000**

The Babaji Kutir is an expression of devotion and faith in that it serves as the ceremonial shrine in remembrance and anticipation of the return of the Guru (teacher), Haidakhan Babaji. The guru's kutir is more than symbolic, it is recognized as an essential element of a spiritual center. The kutir would be a free-standing, but simple building, that would contain a single room.

### **Residents' Living Quarters** **\$450,000**

For many years, there has been a need for a separate quarters for the long-term residents. We visualize this as a two story building with 6 bedrooms and 3 bathrooms. We are currently working on concepts of the design.

### **Multi-Purpose Maha Lakshmi Center** **\$520,000**

The multi-purpose community building will house the kitchen and dining room, the Maha Lakshmi shop and the Ashram and Samaj offices. In addition, the Maha Lakshmi Center will contain a library and public restrooms. Planned for just east of the existing Earthship, the community building is estimated to contain 4,000 sq. ft. of space.

### **Restoration of the Earthship** **\$40,000**

The Earthship currently serves the purpose of the proposed community building but is woefully inadequate to meet those needs. The Earthship was originally built as a dormitory for overnight visitors and those on extended stays, and its restoration will be to this use.

### **Dhuni** **\$40,000**

The dhuni is a permanent structure to house the sacred fire, which is done on a daily basis during the warmer months at the Ashram. With an indoor dhuni, this sacred fire ceremony could be done on a daily basis throughout the year.

### **Retreat Hermitage** **\$40,000**

The retreat hermitage will be a small space (approximately 200 sq. ft.) set aside for rest and renewal, in a separate area from the the Ashram complex. Ashram residents will have first use of the hermitage followed by others on an as-available basis for a nominal cost.

### **Alternative Energy Infrastructure** **\$75,000**

In addition to the built-in energy conservation features of all Ashram buildings, the alternative energy infrastructure will need to be extended throughout the Ashram complex. The infrastructure contains a system of photovoltaic cells and the electrical harness that runs through the buildings. Because of the special nature of the Ashram's commitment to sustainability through alternative energy, the cost of this infrastructure is listed as a separate goal.

**Commercial Kitchen** **\$100,000**

The commercial kitchen for the multi-purpose building is also listed as a separate goal not only because it is a large capital project, but also because it reflects the Ashram’s commitment to community. The kitchen is traditionally a hub of activity and fellowship, and a commercial kitchen will enable it to serve the 100 to 300 plus visitors that may visit the Ashram at any one time.

**Landscaping** **\$150,000**

Landscaping is not only a matter of beautification of the grounds in celebration of holy service, but also an environmental necessity. Proper landscaping prevents erosion from water and wind, provides shade from extreme sun and ground protection against severe winters, and aids in fire mitigation. Landscaping costs are estimated as a percentage of capital projects, and include parking area and driveway improvements.

**Furniture and Fixtures** **\$90,000**

Furniture and fixtures for the buildings, the shop, and the office are also estimated as a percentage of total capital projects. The growing population of visitors, the increase in sales through the shop, and the greater demands on the office staff associated with this growth requires additional beds, chairs, tables, office equipment, lighting fixtures, and similar capital purchases.

**Endowment** **\$1,000,000**

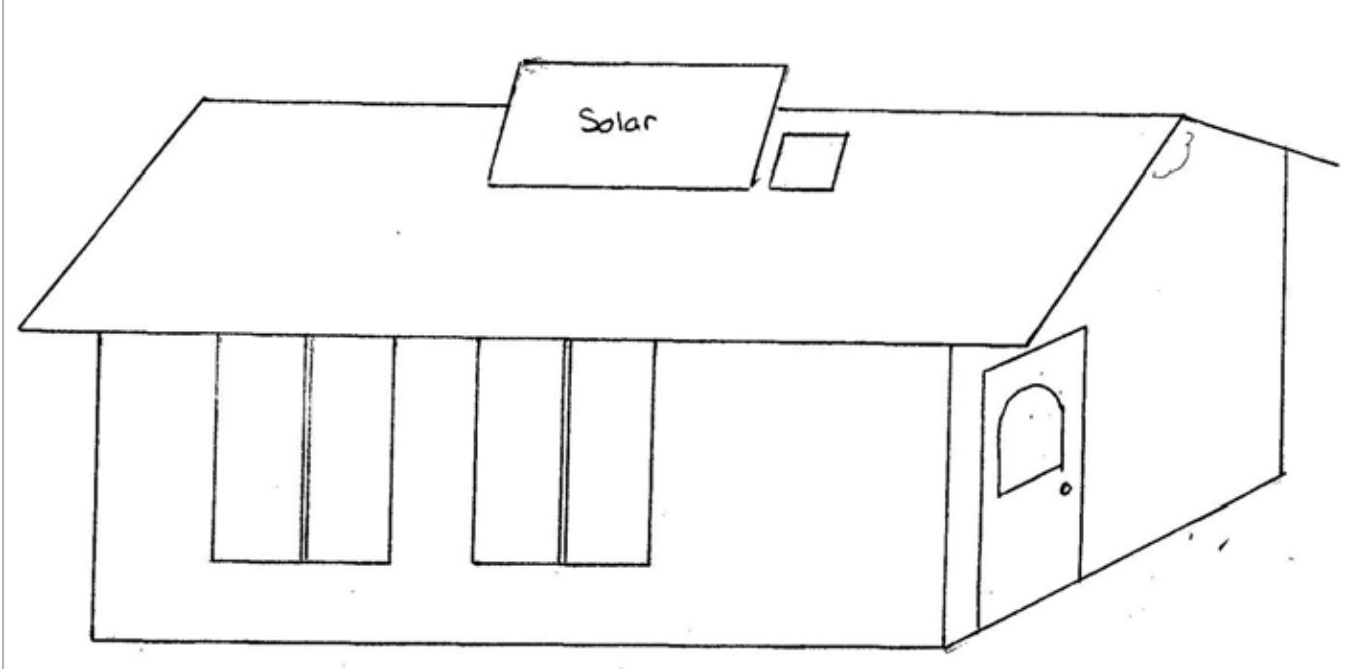
A \$1 million general use endowment is a long-term Ashram goal that is presented in this campaign as a complement to capital projects. A percentage of the earnings of the endowment would be used over time to maintain the buildings, water system, infrastructure, and to support mission-related programs. The endowment would secure the future of the Ashram and provide flexibility to meet changing needs.

# Project Budget Summary

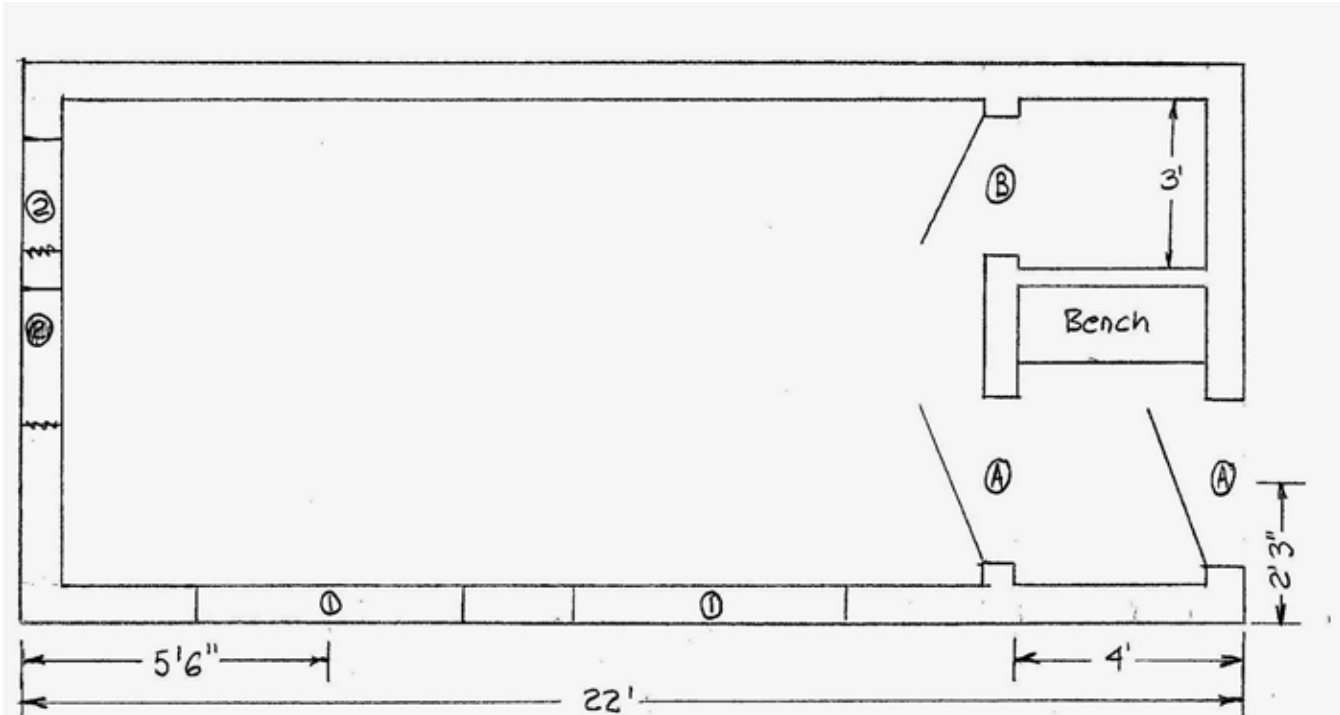
<b>Total Capital Projects</b>		<b>\$1,530,000</b>
Babaji Kutir	\$ 25,000	
Residents' Quarters	\$450,000	
Multi-Purpose Maha Lakshmi Center	\$520,000	
Earthship	\$ 40,000	
Dhuni	\$ 40,000	
Retreat Hermitage	\$ 40,000	
Alternative Energy Infrastructure	\$ 75,000	
Commercial Kitchen	\$100,000	
Landscaping	\$150,000	
Furniture and Fixtures	\$ 90,000	
<b>Endowment</b>		<b>\$1,000,000</b>
<b>TOTAL PROJECT GOAL</b>		<b>\$2,530,000</b>

# Proposed Babaji's Kutir (Room)

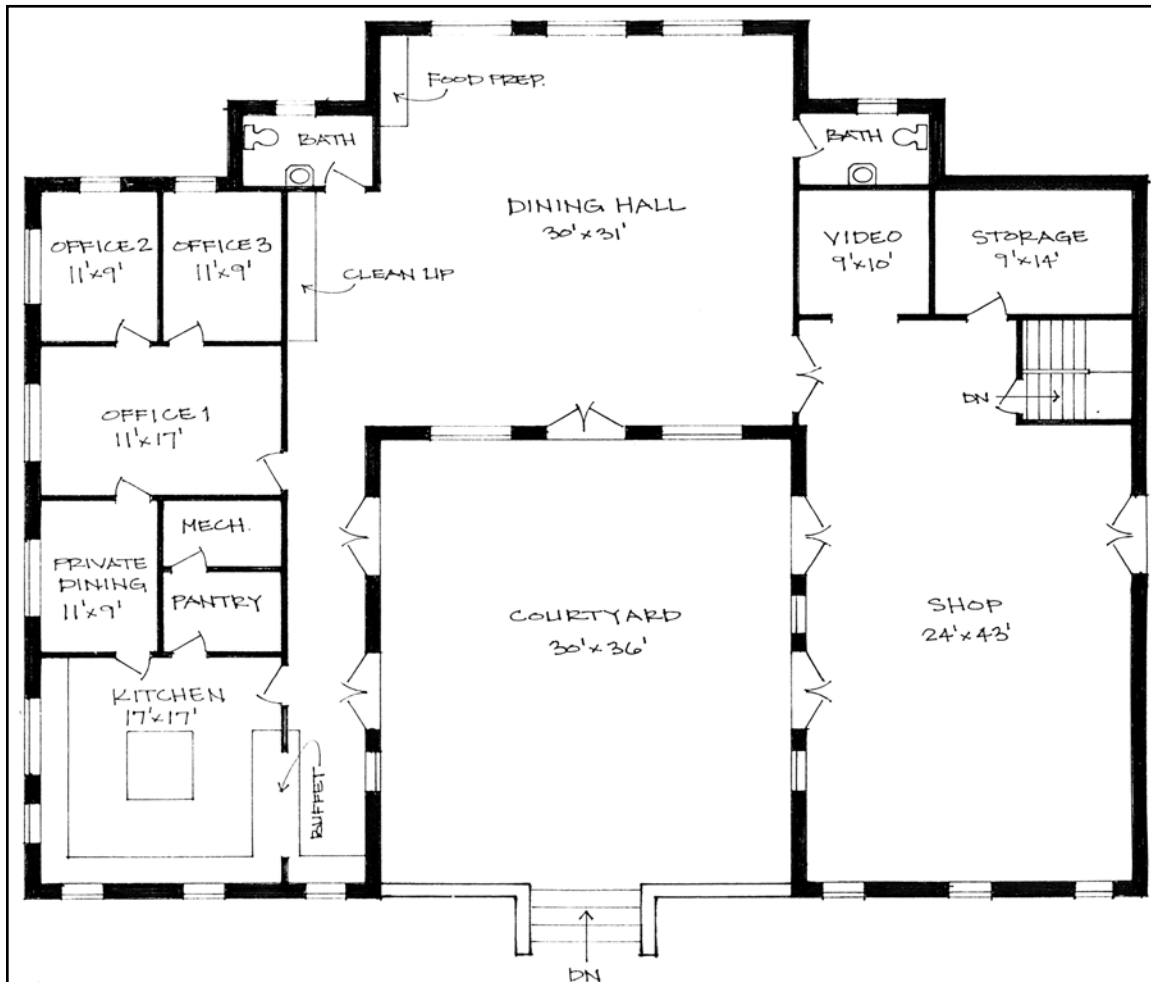
## Conceptual Sketch



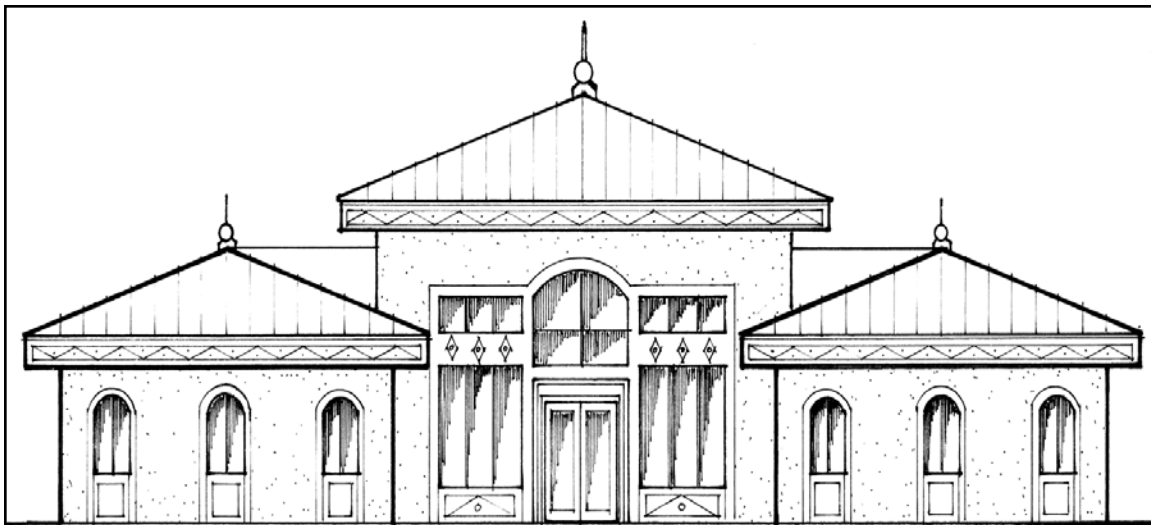
## Floor Plan



# Proposed Multi-Purpose Building



Floor Plan



Conceptual Drawing

# Haidakhandi Universal Ashram

## Board of Directors:

Deborah Wood (aka Ramloti), President  
Crestone, CO.

Jonathan Yates, Vice-President  
Crestone, CO.

Paul Rynasiewicz (aka Premanand), Vice-President  
Crestone, CO.

Paul Koppana, Treasurer  
Crestone, CO.

Vesper Gers, Secretary  
Crestone, CO.

Cindy Cleary, Chair  
Crestone, CO.

Shashi Agarwal  
Denver, CO.

Nirmal Sharma  
Shrewsbury, MA.

Rita Berault  
Crestone, CO.

Ajay Pradan  
Denver, CO.

Sastry Jayanti  
Center, CO.

Carol Huffman  
Tres Piedres, N.M.

Richard Cahall  
Seattle, WA.

Peggy Thompson  
Eugene, OR.